

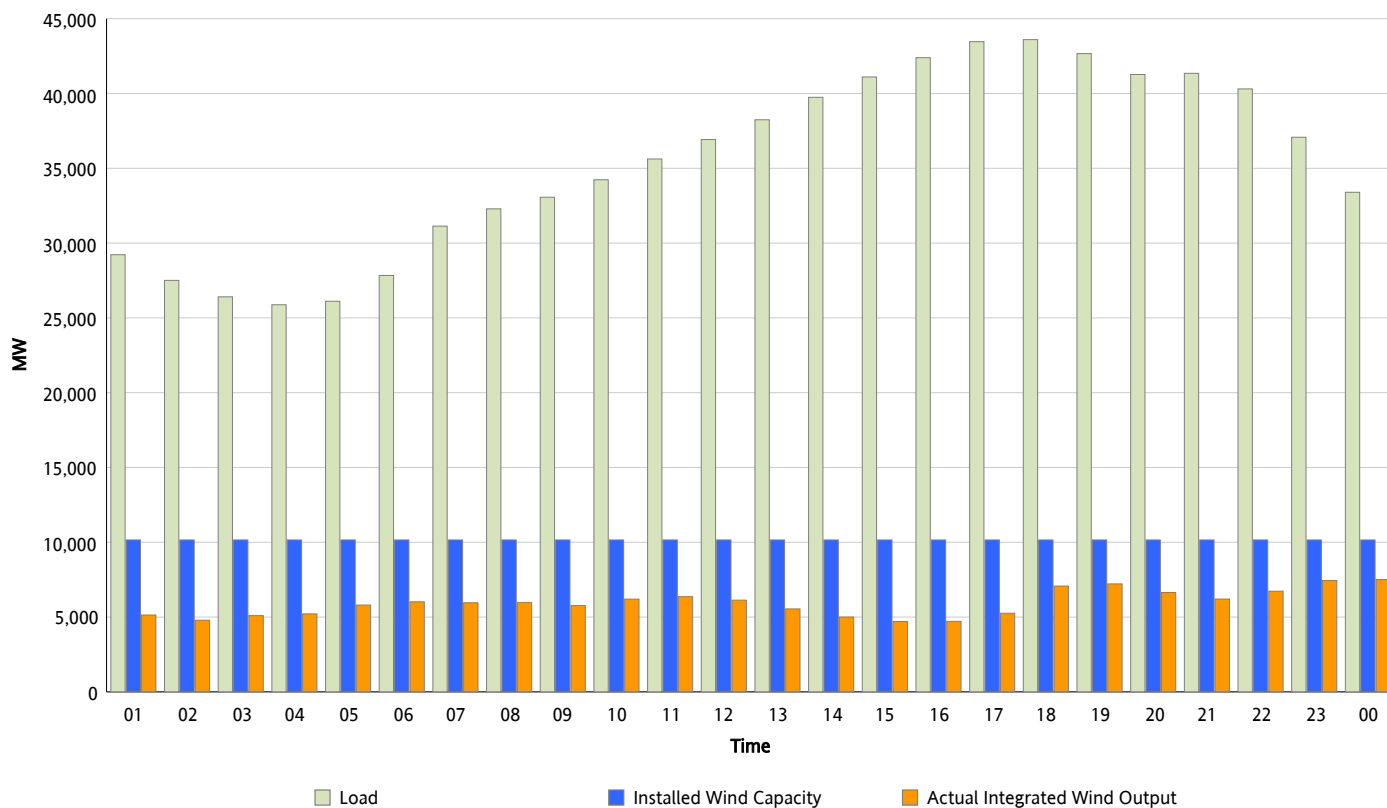


## ERCOT Grid Operations

### Wind Integration Report : 05/08/2013

|                      |           |
|----------------------|-----------|
| Peak Load            | 43,599 MW |
| Load Peak Hour (HE)  | 18        |
| Wind Over Peak       | 7,073 MW  |
| Wind Record 05/02/13 | 9,674 MW  |
| Max Wind Value*      | 7,695 MW  |
| Wind Peak Time       | 23:12     |
| Wind Integration %   | 22.45 %   |

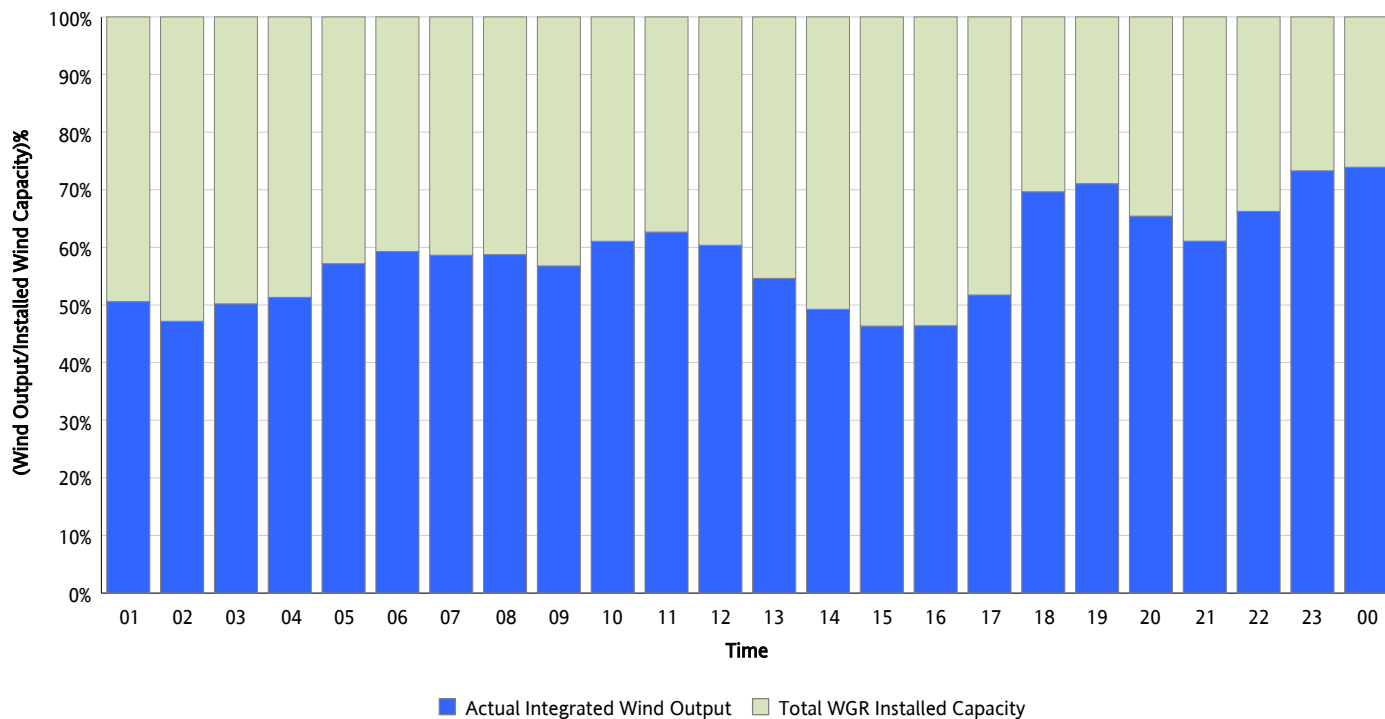
**Hourly Average Actual Load vs. Actual Wind Output**  
05/08/2013



\* Wind Record and Wind Max represent instantaneous values and the rest of the values are integrated over the hour

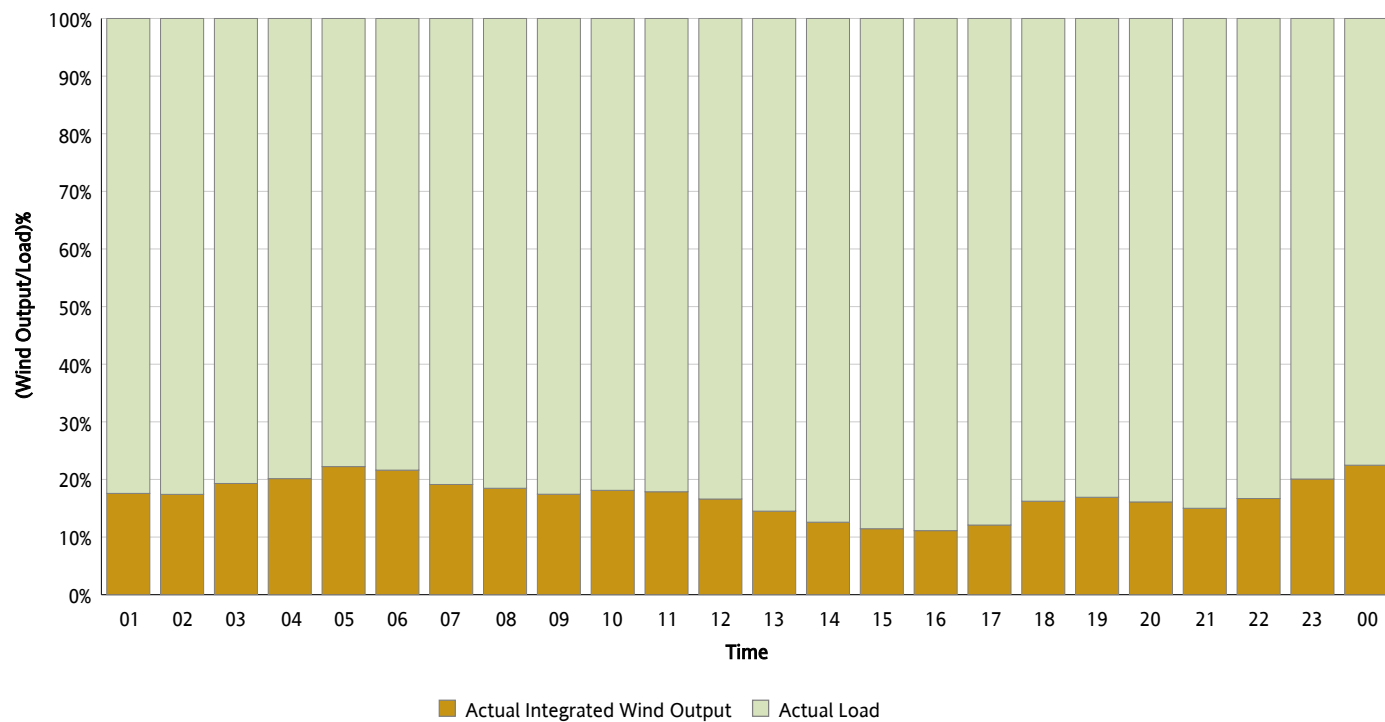
## Actual Wind Output as a Percentage of the Total Installed Wind Capacity

05/08/2013



## Actual Wind Output as a Percentage of the ERCOT Load

05/08/2013



## ERCOT Load vs. Actual Wind Output

05/01/2013 - 05/08/2013

